



Sheffield Square, London, E3

BUTLER & STAG



**A bright and spacious three-bedroom duplex apartment extending to 932 Sq/Ft of internal living space, ideally positioned in the sought-after Sheffield Square, just moments from Bow Road Underground Station.**



## Leasehold

- 932 Sq/Ft Internal Living Space
- Three Bedrooms
- Down Stairs Cloak Room / Toilet
- Well Presented Throughout
- Duplex Apartment
- Chain Free
- Kitchen Diner
- Bow Road / Mile End Tube Station A Moments Walk Away

Set across two well-proportioned levels, this attractive home offers a generous and versatile layout, perfect for both comfortable living and entertaining. The property boasts a light-filled reception room with ample space for dining, complemented by large windows that enhance the sense of openness throughout.

The kitchen is thoughtfully designed with plenty of storage and worktop space, making it practical. Upstairs, three well-sized bedrooms provide flexible accommodation, ideal for professionals, or those seeking additional workspace. A contemporary bathroom and additional storage complete the home.

Further benefits include excellent natural light, a well-maintained building, and a highly convenient location. Bow Road Station is just a short walk away, offering superb transport links into the City, Canary Wharf, and beyond, while the surrounding area provides a variety of local shops, cafés, and amenities.

Residents of Sheffield Square benefit from communal areas and a friendly community atmosphere, all within easy reach of local amenities, excellent schools, and the vibrant cafés, shops, and green spaces of East London. Bow Road Underground and Bow Church DLR stations are close by, offering swift links into Canary Wharf, the City, and beyond.

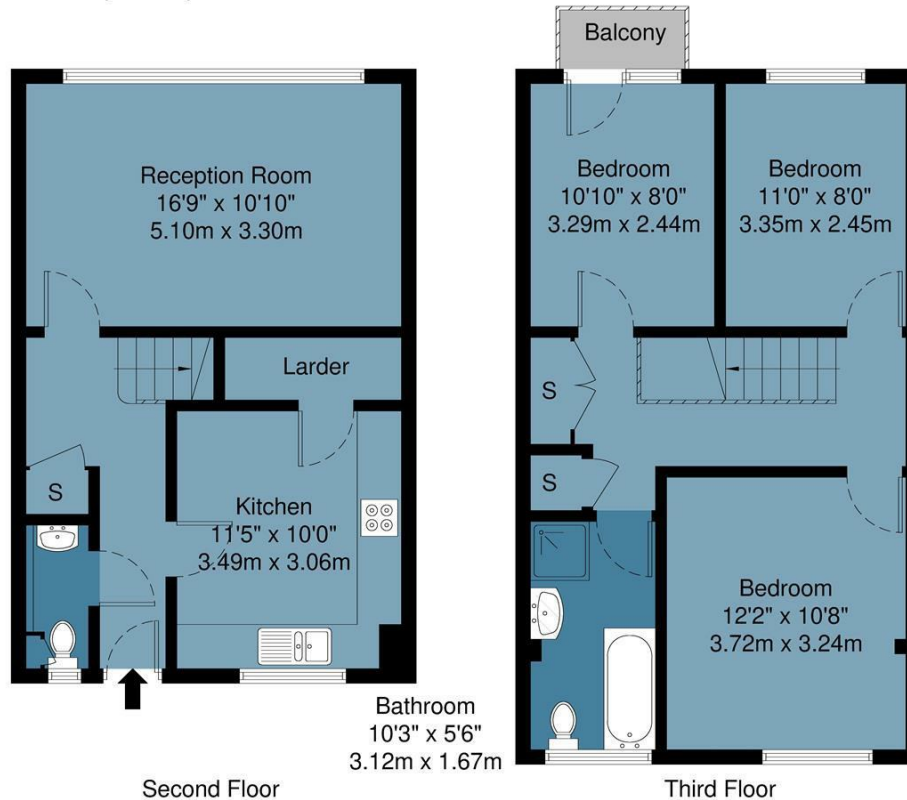




Sheffield Square, E3

Approx Gross Internal Area : 86.6 sq m / 932 sq ft

**BUTLER & STAG**



Measurements are approximate and for illustration purposes only. While we do not doubt the accuracy and completeness, we advise you conduct a careful independent assessment of the property to determine monetary value.  
© @ Maison VUE | www.maisonvue.com

**BUTLER & STAG**

☎ 020 8102 1236

🏠 508 Roman Road, Bow, London, E3 5LU

✉ bow@butlerandstag.com

IMPORTANT NOTICE - These particulars have been prepared in good faith and they are not intended to constitute part of an offer or contract. We have not performed a structural survey on this property and the services, appliances and specific fittings have not been tested. All photographs, measurements, floor plans and distances referred to are given as a guide and should not be relied upon.

[www.butlerandstag.uk](http://www.butlerandstag.uk)